

Ecology
FUSHUN COUNTY
生态抚顺县

一到抚顺县 快乐无极限
To fushun county, there is no limit to happiness

中国·辽宁抚顺县
FUSHUN COUNTY, LIAONING PROVINCE, CHINA

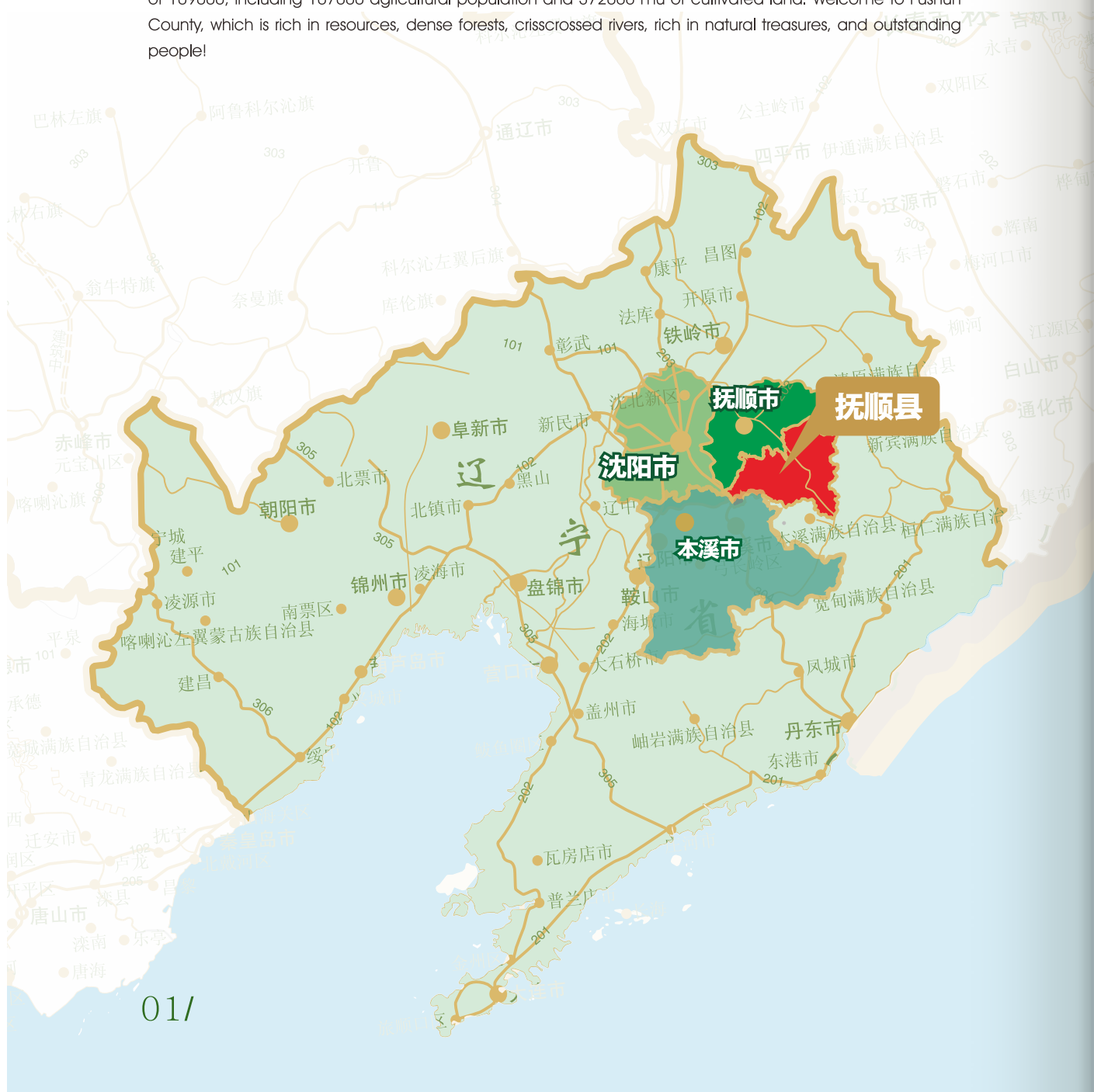
中国·辽宁抚顺县
FUSHUN COUNTY, LIAONING PROVINCE, CHINA



抚顺县概况 / OVERVIEW OF FUSHUN COUNTY

抚顺县位于辽宁省东部。始建于1908年，距今已有一百多年历史。历经世代变迁和几次行政区划调整，现在抚顺县行政区域面积1754平方公里，下辖4镇4乡，总人口10.9万，其中，农业人口10.7万，耕地面积37.2万亩。资源丰富，森林茂密、河流纵横、物华天宝、人杰地灵的抚顺县欢迎您！

Fushun County is located in the east of Liaoning Province. Founded in 1908, it has a history of over 100 years. After generations of changes and several administrative division adjustments, Fushun County now has an administrative area of 1754 square kilometers, including 4 towns and 4 townships, with a total population of 109000, including 107000 agricultural population and 372000 mu of cultivated land. Welcome to Fushun County, which is rich in resources, dense forests, crisscrossed rivers, rich in natural treasures, and outstanding people!



地利优势 / GEOGRAPHICAL ADVANTAGE

抚顺县坐落于辽宁省东部，南与本溪市交界，西与沈阳市接壤，北与抚顺市区相连，紧邻沈抚示范区，形成“三市一区”的区位优势。距离沈阳市政府30公里，距离抚顺市市政府18公里，距离本溪市市政府13公里，距离沈抚新区22公里，距离沈阳桃仙机场25公里，位于沈阳、抚顺、本溪、辽阳、铁岭五城市“一小时经济圈”内。辽宁中部环线、沈通线、苏边线、沈环南线等构成四通八达的交通网络，交通极为便利。

Fushun County is located in the east of Liaoning Province, bordering Benxi City in the south, Shenyang City in the west, Fushun City in the north, and adjacent to Shenfu Demonstration Area, forming a regional advantage of "three cities and one district". It is 30 kilometers from Shenyang Municipal Government, 18 kilometers from Fushun Municipal Government, 13 kilometers from Benxi Municipal Government, 22 kilometers from Shenfu New Area, and 25 kilometers from Shenyang Taoxian Airport. It is located within the "one hour economic circle" of five cities, namely Shenyang, Fushun, Benxi, Liaoyang, and Tieling. The Central Liaoning Ring Line, Shentong Line, Subian Border Line, and Shenhuan South Line form a transportation network extending in all directions, with extremely convenient transportation.





生态资源 / ECOLOGICAL RESOURCES

七山一水分半田 半分道路和庄园

Seven mountains one water half fields half roads and manors

抚顺县自然资源丰富，现已探明地下矿藏26种，其中素有“人参铁”之称的低磷、低硫铁矿石储量大约1.8亿吨。林地总面积192.7万亩，森林覆盖率70%以上。野生可食用植物和中草药材45种，年采量300万公斤以上。境内有社河、苏子河、东洲河和古城子河等大、小河流88条。县属中、小型水库19座，总库容0.6亿立方米。

Fushun County is rich in natural resources, and there are 26 types of underground mineral deposits that have been proven. Among them, the low phosphorus and low sulfur iron ore reserves known as "ginseng iron" are about 180 million tons. The total area of forest land is 1.927 million mu, with a forest coverage rate of over 70%. There are 45 species of wild edible plants and Chinese herbal medicines, with an annual harvest of over 3 million kilograms. There are 88 large and small rivers in the territory, including the She River, the Suzi River, the Dongzhou River, and the Guchengzi River. There are 19 medium and small reservoirs in the county, with a total storage capacity of 60 million cubic meters.

辽宁2300万人饮用水源地大伙房水库

Dahuofang Reservoir a drinking water source for 23 million people in Liaoning Province

抚顺县全力构建“低碳、有机、循环，生态、健康、休闲”型生态文明新农村，通过积极开展人居环境整治和大伙房水库水质安全保护，建设具有抚顺县特色的生态文明新农村，取得了明显成效，全县生态保护功能大大提升，环境质量显著改善。

Fushun County has made every effort to build a "low-carbon, organic, circular, ecological, healthy, and leisure" type of ecological civilization new countryside. By actively carrying out residential environment improvement and water quality safety protection of Dahuofang Reservoir, Fushun County has built an ecological civilization new countryside with Fushun County's characteristics, achieving significant results. The ecological protection function of the whole county has been greatly improved, and the environmental quality has been significantly improved.

生态宜居 / ECOLOGICAL AND LIVABLE

充分发挥抚顺县各乡镇的区位、环境和资源优势，坚持生态文明理念，突出“园在城中、城在田中、田城相融”特色，高起点规划、高标准建设、打造基础设施完善、公共服务体系齐全、经济社会充满活力、人居环境生态优美、社会管理模式先进的现代田园新城镇。2018年，抚顺县参加国家交通运输部在浙江安吉县召开的全国“四好农村公路”管理现场会。会上，交通运输部、农业农村部 and 国务院扶贫办三部门联合授予抚顺县全国“四好农村路”示范县称号。

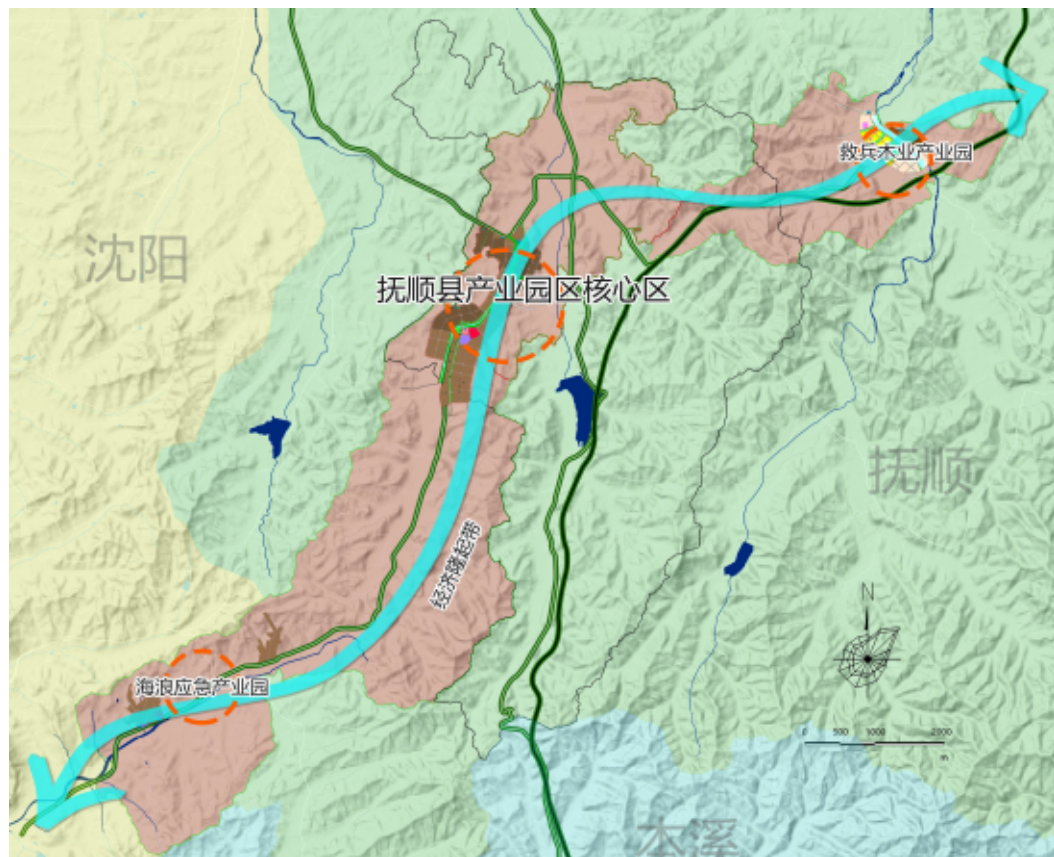
Give full play to the location, environment, and resource advantages of various towns and townships in Fushun County, adhere to the concept of ecological civilization, highlight the characteristics of "park in the city, city in the field, and city in the field", and create a modern rural new town with high starting point planning, high standard construction, complete infrastructure, complete public service system, vibrant economy and society, beautiful ecological living environment, and advanced social management mode. In 2018, Fushun County participated in the national "Four Good Rural Roads" management on-site meeting held by the Ministry of Transport in Anji County, Zhejiang Province. At the meeting, the Ministry of Transport, the Ministry of Agriculture and Rural Affairs, and the Poverty Alleviation Office of the State Council jointly awarded Fushun County the title of the National "Four Good Rural Roads" Demonstration County.



规划发展 / PLANNING DEVELOPMENT

抚顺县产业园区于 2021 年 12 月被正式批准为市级产业园区，2022 年 1 月获得环评批复。规划面积为 10.08 平方公里，整体为“一区两园（核心区：石文再生资源产业园 2 平方公里，石文铁矿业产业园 3.78 平方公里；两园：救兵木业产业园 2.69 平方公里，海浪新兴工业产业园 1.61 平方公里）”结构。

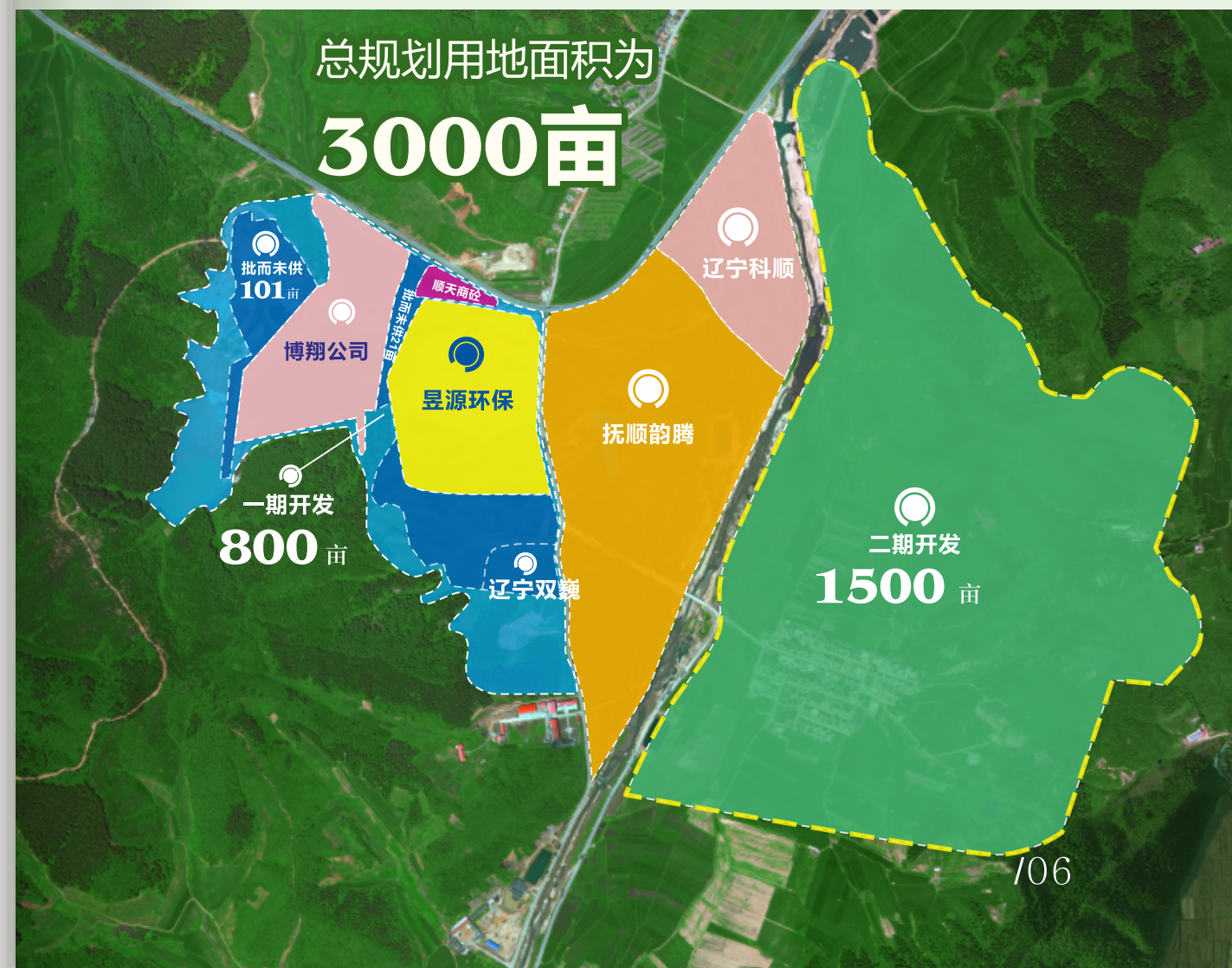
Fushun County Industrial Park was officially approved as a municipal industrial park in December 2021, and received an environmental assessment approval in January 2022. The planned area is 10.08 square kilometers, and the overall structure is "one zone and two parks (core area: Shiwen Renewable Resources Industrial Park, 2 square kilometers, Shiwen Iron Mining Industrial Park, 3.78 square kilometers; two parks: Rescue Wood Industrial Park, 2.69 square kilometers, and Hailang Emerging Industrial Park, 1.61 square kilometers)".



石文新兴产业园 SHIWEN NEW INDUSTRIAL PARK

石文再生资源产业园规划面积3000亩，总投资2.4亿元的石文再生资源产业园基础设施建设项目基本竣工，通过招商引资，博翔环保、辽宁双巍相继落户石文再生资源产业园并顺利投产，辽宁科顺、韵腾环保和昱源宁海项目实现签约。目前，园区危废处理区剩余批而未供土地 157 亩，预计征收土地 105 亩；固废处理区剩余 251 亩预计征收土地。

The infrastructure construction project of the Shiwen Renewable Resources Industrial Park, with a planned area of 3000 mu and a total investment of 240 million yuan, has been basically completed. Through investment attraction, Boxiang Environmental Protection and Liaoning Shuangwei have successively settled in the Shiwen Renewable Resources Industrial Park and successfully put into production. Liaoning Keshun, Yunteng Environmental Protection and Yuyuan Ninghai projects have achieved contract signing. Currently, there are 157 mu of land remaining in the hazardous waste treatment area of the park but not yet provided, and it is estimated that 105 mu of land will be expropriated; The remaining 251 mu of land in the solid waste treatment area is expected to be expropriated.



救兵木业产业园

JIUBING WOOD INDUSTRY PARK

救兵木业园区规划面积4035亩，2020年启动园区（标准化厂房）项目建设，总投资2.5亿元，规划占地面积178亩，总建筑面积4.8万平方米，包括A、B、C、D四个区域标准化厂房、库房、综合楼及相关基础配套设施已基本完工。同时，园区预留项目建设用地512亩及83亩商储地块对外招商。

目前，救兵镇有地板加工企业300余家，从业人员近万人，销售地板400万平方米，获得中国地板第一乡的美誉。达亨木业、东体运动木业等企业在国内享有威名。

JIUBING Wood Industry Park is 4035 mu. In 2020, the construction of the park (standardized factory building) project was launched, with a total investment of 250 million yuan. The planned area is 178 mu, with a total construction area of 48000 square meters. The standardized factory buildings, warehouses, complex buildings, and related infrastructure supporting facilities in four regions A, B, C, and D have been basically completed. At the same time, the park reserves 512 mu of construction land and 83 mu of commercial storage plots for external investment.

Currently, there are more than 300 flooring processing enterprises in JIUBING Town, with nearly 10000 employees and sales of 4 million square meters of flooring, earning the reputation of being the first township of flooring in China. Enterprises such as Daheng Wood Industry and Dongti motion Wood Industry enjoy a prestigious reputation in China

海浪应急产业园

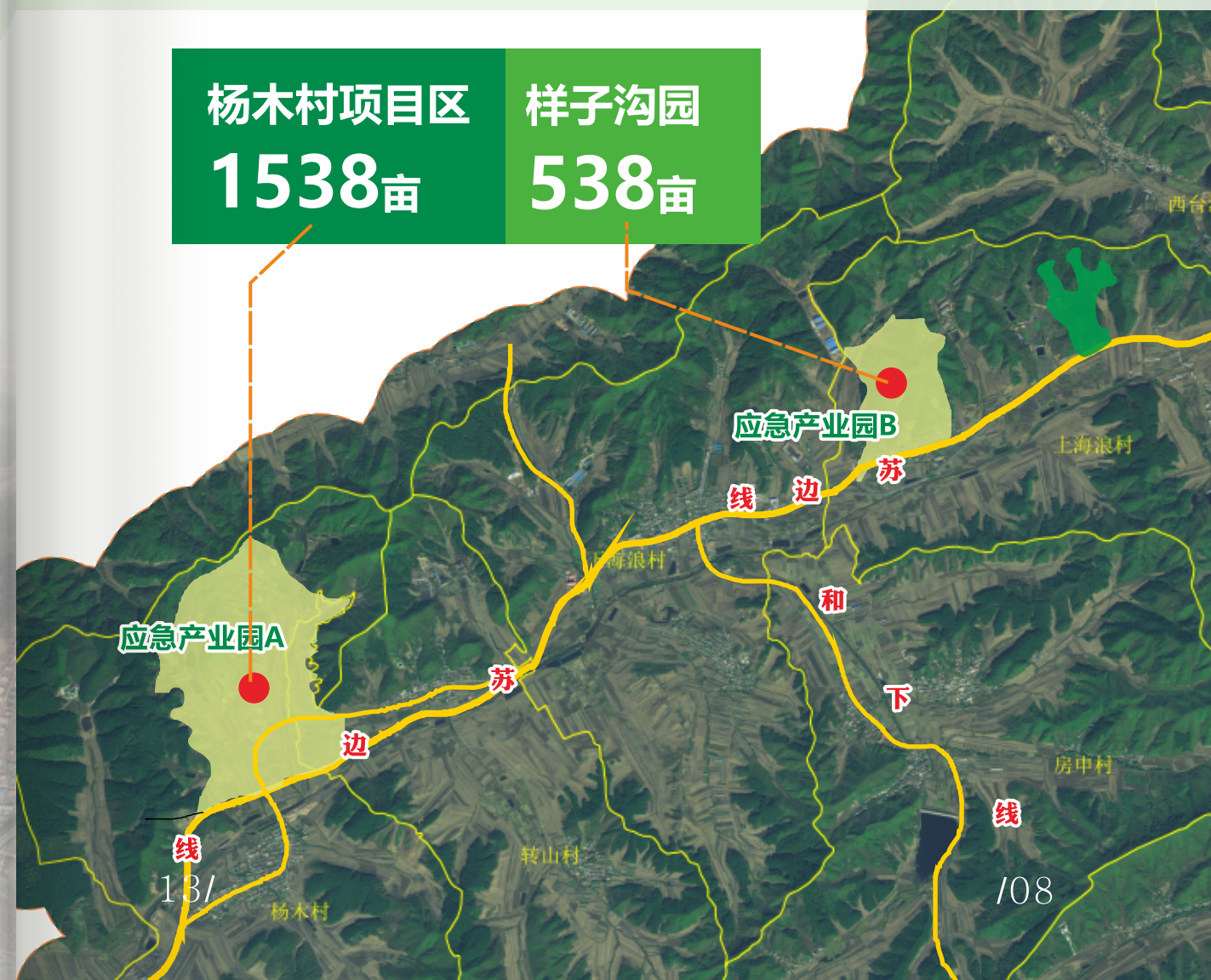
HAILANG EMERGENCY INDUSTRIAL PARK

海浪应急产业园规划面积2415亩，地处沈、抚、本三市交界，距离沈阳桃仙机场仅25公里，区位优势明显。2023年计划实施杨木A园（1538亩）和样子沟园（B园538亩）基础设施建设，分别投资需投资约4亿元、1.4亿元，主要内容有：建设园区内基础设施，包括场地平整、给排水管线、铺设沥青路面、电气工程、供暖工程、污水处理厂工程等，按照应急环保新兴产业定位，对外开展招商引资工作。

The planned area of Hailang Emergency Industrial Park is 2415 mu. located at the junction of Shenyang, Fushun, and Benxi, it is only 25 kilometers away from Shenyang Taoxian Airport, with obvious geographical advantages. It is planned to implement the infrastructure construction of Yangmu . A Park (1538 mu) and Xiangzigou Park (538 mu) in 2023, with an investment of about 400 million yuan and 140 million yuan respectively. The main contents include: building infrastructure in the park, including site leveling, water supply and drainage pipelines, laying asphalt pavement, electrical engineering, heating engineering, sewage treatment plant engineering, etc. Based on the positioning of emerging emergency environmental protection industry, Carry out foreign investment promotion work.

杨木村项目区
1538亩

样子沟园
538亩



三块石养生谷

SANKUAISHI HEALTH PRESERVING VALLEY

三块石——国家AAAA森林公园景区
Sankuaishi - National AAAA Forest Park Scenic Area

抚顺三块石地区是以三块石山命名的，主峰海拔1131米以三块石公园基础设施建设为核心，以提升景区知名度为目标进一步提升“三块石”旅游品牌影响力，努力将三块石建设成为集生态观光、红色教育、康体娱乐、休闲度假、户外运动、节庆活动等多种功能为一体的综合性旅游区和省内短途休闲旅游的最佳目的地。

Fushun Sankuaishi District is named after Sankuaishi, with the main peak elevation of 1131 meters, with the infrastructure construction of Sankuaishi Park as the core, and the goal of improving the visibility of the scenic area to further enhance the influence of the "Sankuaishi" tourism brand, striving to build Sankuaishi into a collection of ecological sightseeing, red education, health and entertainment, leisure and vacation, outdoor sports A comprehensive tourism area with multiple functions such as festivals and festivals, and the best destination for short distance leisure tourism in the province.



温泉养生谷项目土地规划

PLANNING OF HOT SPRING HEALTH VALLEY PROJECT

2011年，由日本抚松明基长白山温泉开发有限公司勘测温泉资源，并成功开采，依托周边三块石、天女山、梨花谷等旅游景点，计划开发温泉康养项目。

项目总占地面积1700亩，其中符合规划用地379亩建设内容包括温泉地产、温泉度假等与温泉养生相关的产业，该项目力求通过开发建设打造辽宁地区乃至东北地区规模最大、档次最高、项目最齐全、设施最先进的特色温泉养生度假型区。

In 2011, Japan's Fusong Mingji Changbai Mountain Hot Spring Development Co., Ltd. surveyed and successfully exploited the hot spring resources. Relying on the surrounding Sankuaishi Tiannvshan, Lihuagu and other tourist attractions, it planned to develop a hot spring health project.

The project covers a total area of 1700 mu, of which 379 mu meets the planning. The construction content includes hot spring real estate, hot spring vacation, and other industries related to hot spring health preservation. The project strives to create a characteristic hot spring health preservation resort area with the largest scale, highest grade, most complete projects, and most advanced facilities in Liaoning and even Northeast China through development and construction

